

# Psychosocial

Slipknot

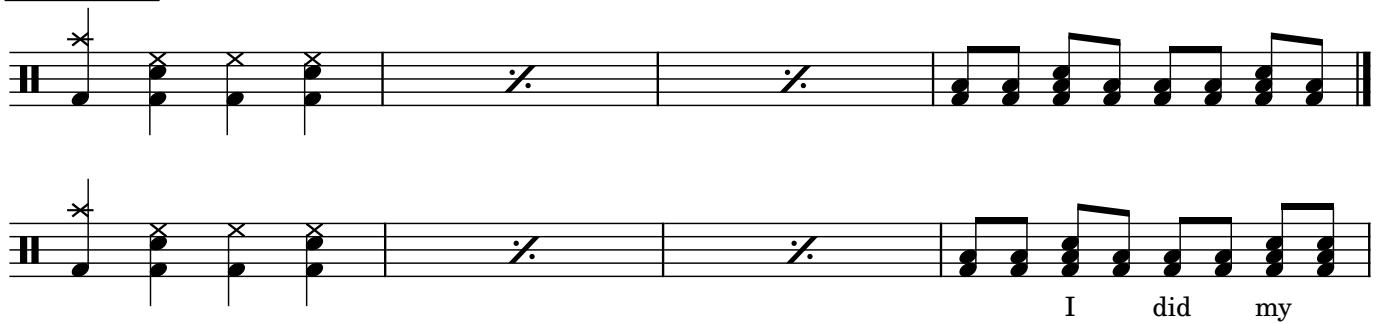
dr.: Joey Jordison

## Intro

$\text{♩} = 135$   $\frac{4}{4}$



## Chorus

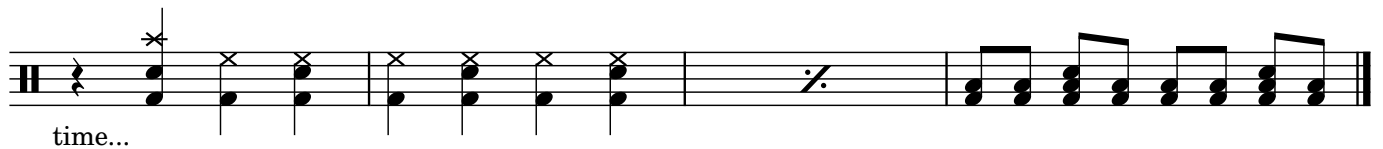


I did my

## into Verse (A)

After the Chorus, Verses start with a rest on beat 1

Continues with the regular structure that you find at the end of the chart



time...

**A**

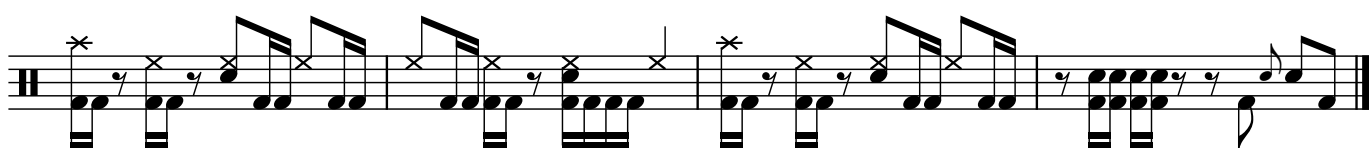
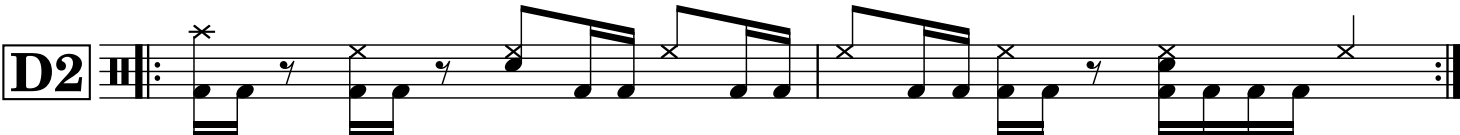
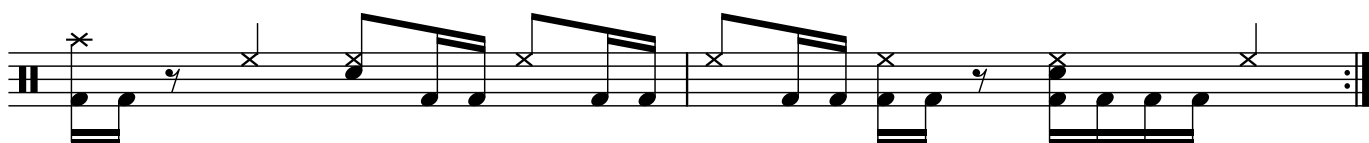


**B1**



**B2**





End!

## **Full Structure**

**Intro**

**Chorus (no vocals) : A A**

**Verse: A A A A**

**Pre-Chorus: B1 - B2**

**Chorus: A A**

**Verse : A A A A**

**Pre-Chorus: B1 - B2**

**Chorus: A - A**

**Solo: B1 - B3**

**Bridge: C - D1 - D2**

**Verse: A A**

**Pre-Chorus: B1- B1 - B1 - B3**

**Coda D2 - D2 (on China)**

**Full Transcription available on request!**